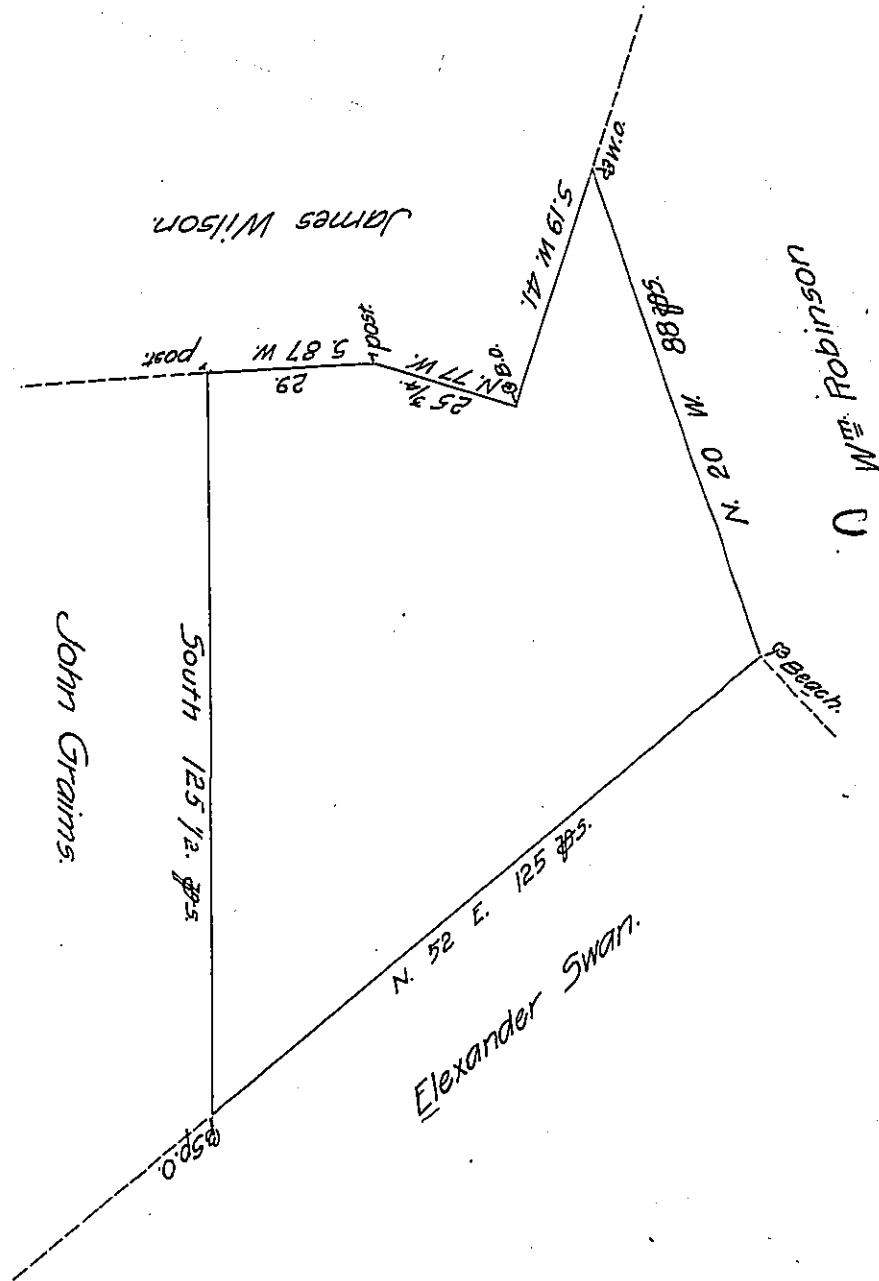


FORM NO 1.



0-169-264

By Virtue of an application N<sup>o</sup> 1102, dated the 21<sup>th</sup> day of October, 1765  
 Surveyed the 15<sup>th</sup> day of January, 1766, to Mary Swan the above des-  
 cribed Tract of Land situate in Hanover Township, Lancaster County  
 Containing fifty acres & sixty six perches and the allowance of Six  $\frac{1}{2}$  Cent.  
 pr. J<sup>no</sup> Scull. --

IN TESTIMONY that the above is a copy of the original remaining on file in  
 the Department of Internal Affairs of Pennsylvania, made  
 conformably to an Act of Assembly approved the 16th day of  
 February, 1833, I have hereunto set my Hand and caused  
 the Seal of said Department to be affixed at Harrisburg,  
 this Twelfth day of June 1908.

*Henry Howard*  
 Secretary of Internal Affairs.